

- Very hard
- Acid resistant
- Non-reflective surface
- 100% corrosion proof
- High Dimensional Stability
- Low coefficient of thermal expansion



**Non-magnetic and electrically non conductive**

**Fast and easy to clean**

**Free from burrs or protrusions**

**Wear resistant resulting in much longer life span**





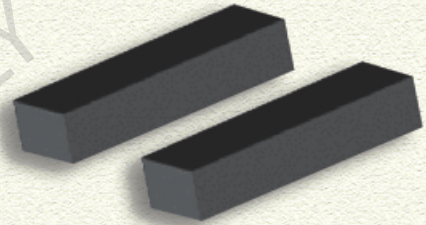
- ◆ Granite Surface Plates are manufactured to precision standards using best quality black Granite for measuring applications, Layout marking and lapping precision parts.



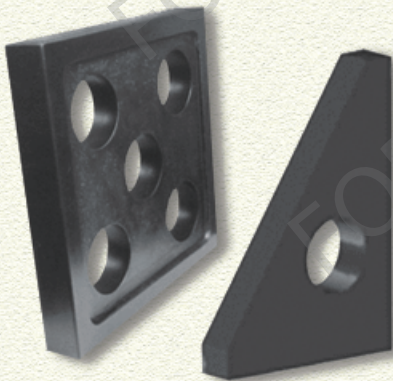
Granite Surface Plate

- ◆ The top surface is lapped to accuracies as per the **DIN 876 standard** GMT Metrology Surface Plates are offered in four Grades Laboratory **Grade - 00**, Inspection **Grade - 0**, Tool room **Grade - I and II**.
- ◆ These are also supplied for use as **CMM reference bases** for clamping special fixtures.
- ◆ T-Slots can be provided for clamping of components.
- ◆ **Threaded Inserts made of stainless steel can be provided on request, fitted equi-spaced (Pitch) as per customer requirements.**

- ◆ The GMT black granite Straight Edge is made of Indian Diabase Black Granite.
- ◆ The straight edges are lapped on top and bottom faces.
- ◆ **These are used for setting up of work on surface plates and machining tables for straightness and flatness.**



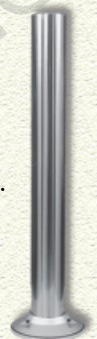
Granite Straight Edges



Granite Master Square

- ◆ Granite Master Square is used for direct checking of squareness and straightness, for calibration of CMM, Machining Centers, etc.
- ◆ All six sides are lapped to accuracies as requested by customer.
- ◆ **The plates are made of black granite of different sizes to meet customer needs.**

- ◆ The Master Cylinder is used for checking squareness of machine parts and fixtures.
- ◆ The GMT Metrology Master Cylinder is made from high quality, hardened, wear resistant steel.
- ◆ Bottom surface and outer dia (OD) are precision ground to very high accuracy.
- ◆ **Various sizes are offered to suit customer requirements.**



Master Cylinder

*For size, specifications, price and more details on our products, please contact us.*

**GMT Metrology Private Limited,**  
**Plot No. 104/2 SIPCOT Industrial Complex,**  
**Hosur - 635 126. (TN). India**  
**Telephone : + 91 4344 276046 Fax : + 91 4344 276450**  
**Website : [www.gmt.co.in](http://www.gmt.co.in) e-mail : [gmtmetrology@vsnl.net](mailto:gmtmetrology@vsnl.net)**

*Due to constant development work we reserve the right to depart from catalog specifications.*